



Chisenhale Road, London, E3

BUTLER & STAG



Characterful four bedroom Victorian house nestled within the desirable Driffield conservation area and backing onto the serene Hertford Union Canal.



- Four Bedroom Victorian House
- Backing onto the Hertford Union Canal
- Exceptionally Spacious with Period Charm
- Part Furnished
- Driffield Conservation Area
- Two Bathrooms
- Moments from Victoria Park
- Available September 2025

Arranged over four floors (which includes a basement, perfect for additional storage), this wonderful terraced house encompasses a great sense of space and period charm.

The location speaks for itself, positioned on a quiet residential road yet still moments from the action - with the amenities of vibrant Roman Road and the ever-popular Victoria Park just moments away. Mile End underground station is easily accessible and numerous bus links into the City and Stratford are on hand. A popular local primary school and the artisan offerings of Victoria Park Village are also close by.

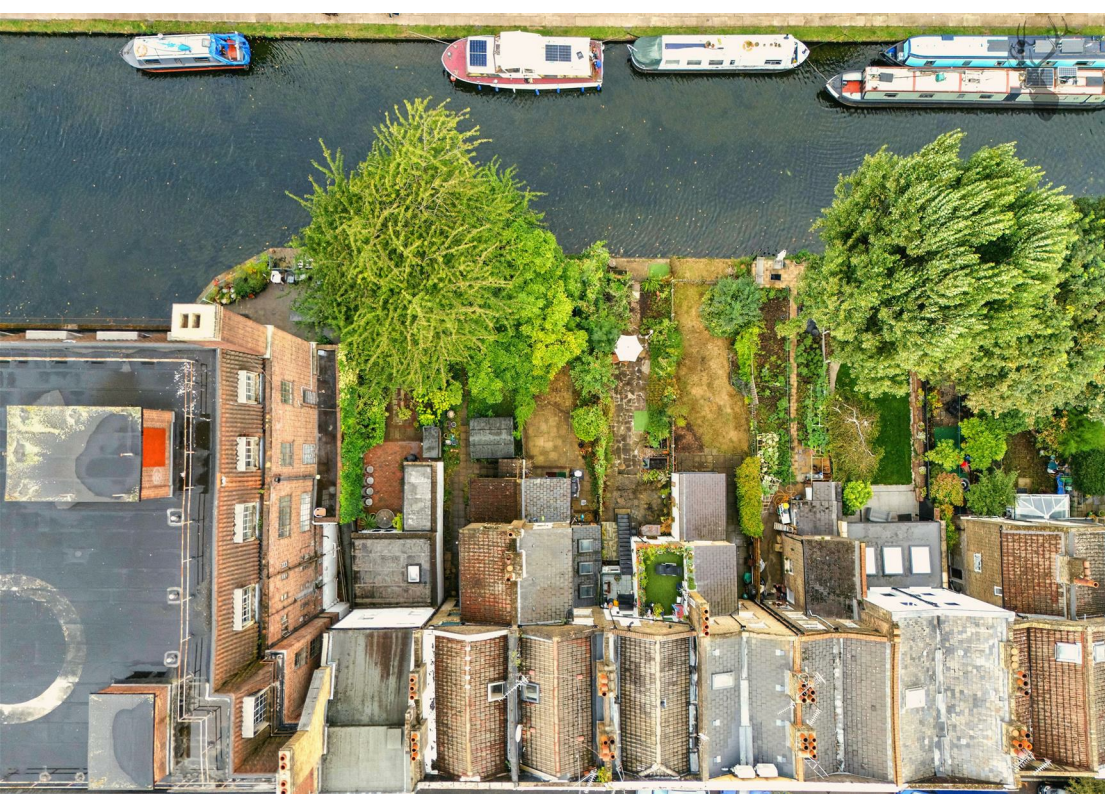
The ground floor accommodation comprises of a grand entrance hallway, a spacious living room and a bright open-plan kitchen/dining space which opens out onto a private rear garden, which in turn leads to a sheltered, decked area overlooking the canal, a perfect spot to enjoy a morning coffee or for al-fresco dining on the water's edge.

The first floor comprises of two double bedrooms and a gorgeous bathroom, with a further two double bedrooms, a study/work-from-home space and a shower room on the top floor.

Perfectly suited to a family or professional sharers seeking a spacious period home in a tranquil pocket of East London, this property is offered part furnished and is available from mid-September 2025.

EPC Rating D
Council Tax Band F





Chisenhale Road

Approx. Gross Internal Area 180.7 Sq M (1944.5 Sq Ft)

BUTLER & STAG



Measurements are approximate and for illustration purposes only. While we do not doubt the accuracy and completeness, we advise you conduct a careful independent assessment of the property to determine monetary value.
© @modephoto.uk www.modephoto.co.uk

IMPORTANT NOTICE - These particulars have been prepared in good faith and they are not intended to constitute part of an offer or contract. We have not performed a structural survey on this property and the services, appliances and specific fittings have not been tested. All photographs, measurements, floor plans and distances referred to are given as a guide and should not be relied upon.

BUTLER & STAG

☎ 020 8102 1236

🏠 508 Roman Road, Bow, London, E3 5LU

✉ bow@butlerandstag.com

www.butlerandstag.uk